



Bristol Airport

UK ACC

November 2025

Graeme Gamble
Chief Operating Officer



Purpose:

Connecting our region responsibly.

Vision: To be **everyone's favourite airport**, delivering a future we can all be proud of.

Values:



One team,
one family



Make a
difference



Doing
what's right



Working
with Passion



Always
aiming high

Strategic intents:



Seamless
customer
experience



Continuously
improving



Deliver our
growth plans



A Great
Place to Work



A sustainable
future



Safe and
secure

Key

- Primary catchment area: 7 million
- Secondary catchment area: 3 million



Our region's primary airport

115+ destinations



BRS Passenger Growth 2016 to 2027



Sustainability and social value

Bristol Airport Sustainability Strategy – 2023-28

1

Be a net zero airport across our operations by 2030.



2

Reduce indirect emissions and support the development of zero emissions flight.



3

Protect and enhance our local environment.



4

Support our communities and enable our region to thrive.





Supporting the local and regional economy

5,800 employed on site, across 50 businesses:

- 70% live local, within 20 miles
- 25,000 indirect jobs across our region

Over next few years:

- Additional £50m direct GVA pa, £20m wider benefits and 530 jobs (430 FTEs) in North Somerset.
- 1.1m in-bound visitors, value to tourism in the region ~£100m pa

With commitments to:

- Extend our social value commitments through our suppliers.
- Minimum target of £200,000 of local spend per £m on construction with an annual target of £7.25m local supply chain spend.
- Minimum target of 25% of each construction contract to be subcontracted to be local contractors

Skills & Employment

Apprenticeships

- 9 apprentices in motor transport and engineering
- 16 apprentices through construction contracts

Take-Off Programme

Delivered in partnership with North Somerset Council and Weston College

- Supporting those not in education, training, or employment into roles

School and College Engagement

- Education outreach programme
- 1,587 students reached in 31 sessions so far in 2025
- Equivalent of 124 teaching hours





Our local community

Community support

- Local Community and Diamond funds
- Charity partnership
- Noise mitigation grants

Community issues

- Parking and traffic
- Noise and night flights

Investment

← Bus & Coach
Silver Zone Shuttle
Waiting Zone Shuttle
Car Rental Shuttle
Smoking Area

Terminal ↑
Minibus

Toilets →

← Bus & Coach
Silver Zone Shuttle
Waiting Zone Shuttle
Car Rental Shuttle
Smoking Area

Terminal ↑
Minibus

Terminal

Terminal

£400m Investment Programme



Phase 1

Completed

- ✓ Public Transport Interchange
- ✓ Next Generation Security
- ✓ New Airport Lounge Additional
- ✓ Boarding Gates



Phase 2

Begun autumn 2025

- Bigger, better departure lounge
- Exciting new retail and catering offering
- EV charging hub



Terminal transformation

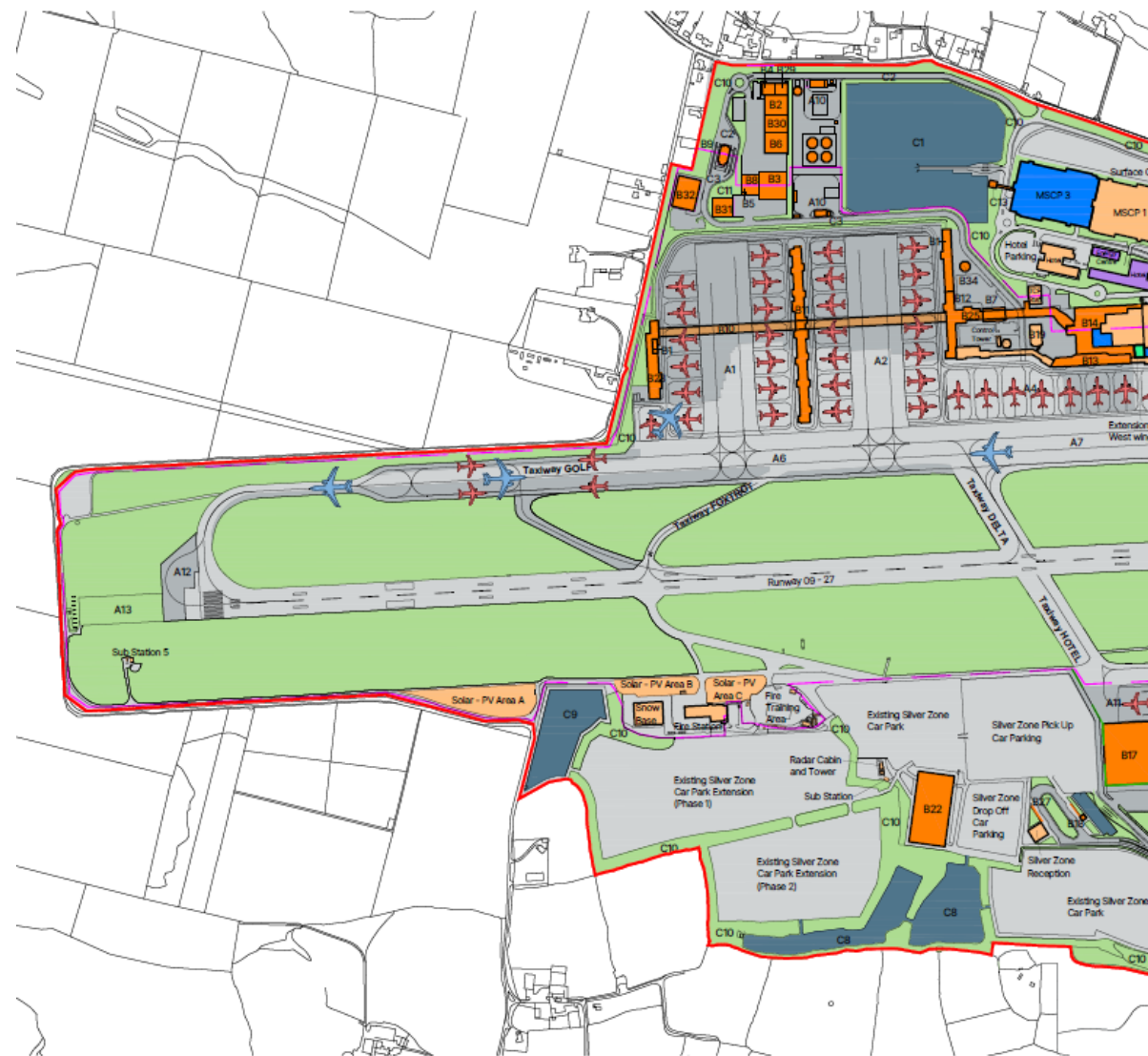


Our future
Increasing
capacity to
15mppa



Future Growth Plans

- Increasing capacity from 12mppa to 15mppa
- Runway improvement to cater for larger aircraft
- New long-haul route opportunities
- Enhanced customer experience
- Additional aircraft stands and easier boarding



A photograph of an airport tarmac under a blue sky with wispy clouds. In the foreground, a Ryanair aircraft is parked at a gate, with its boarding stairs extended. Behind it, the tail of an EasyJet aircraft is visible. In the background, there is a large airport terminal building and a control tower.

Future Growth Plans

Seizing the benefits

- 1,000 additional on-site jobs
- £1bn in additional GVA
- New destinations, including long-haul
- Increased frequency to key destinations
- Supporting inbound tourism

Continuing to invest

- 20%+ public transport access
- Commitment to net zero operations by 2030
- 10% biodiversity net gain
- Supporting zero emissions flight